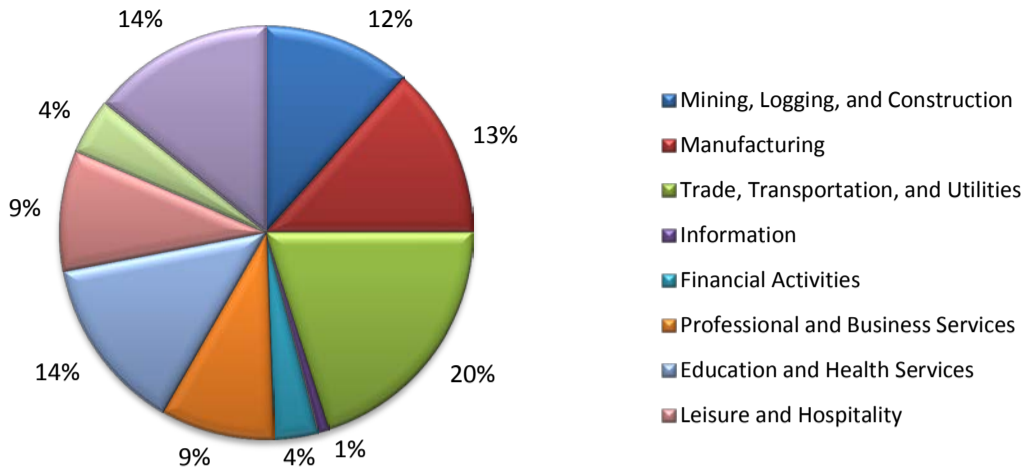
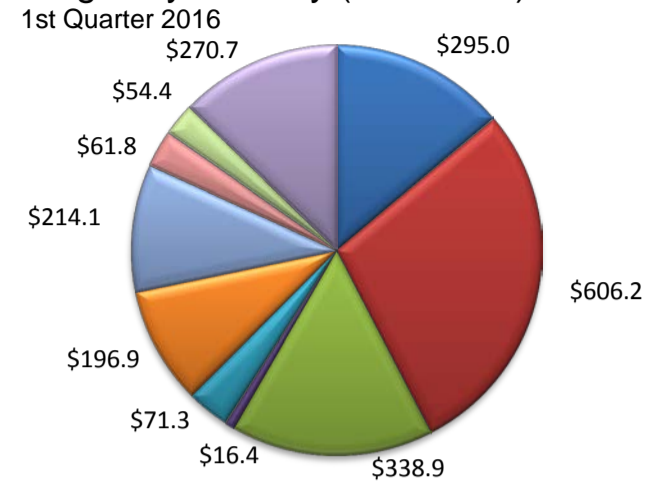


(Hardin, Jefferson, Newton, Orange)

Industry Composition



Wages by Industry (in millions)



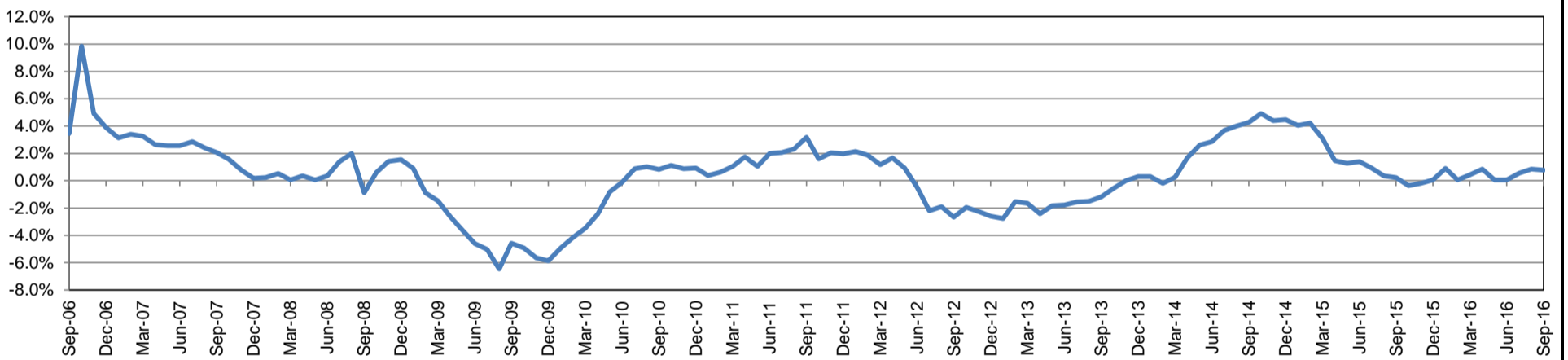
Employment by Industry

	Sep-16	Aug-16	Sep-15	Monthly Change		Annual Change	
				Actual	%	Actual	%
Total Nonfarm	167,300	166,100	166,000	1,200	0.7%	1,300	0.8%
Mining, Logging, and Construction	19,300	19,100	18,400	200	1.1%	900	4.9%
Manufacturing	22,500	22,600	23,300	-100	-0.4%	-800	-3.4%
Trade, Transportation, and Utilities	33,700	34,000	33,200	-300	-0.9%	500	1.5%
Information	1,400	1,400	1,500	0	0.0%	-100	-6.7%
Financial Activities	5,800	5,800	6,000	0	0.0%	-200	-3.3%
Professional and Business Services	14,900	14,900	14,500	0	0.0%	400	2.8%
Education and Health Services	22,800	22,800	22,500	0	0.0%	300	1.3%
Leisure and Hospitality	15,800	16,100	15,400	-300	-1.9%	400	2.6%
Other Services	7,300	7,000	6,900	300	4.3%	400	5.8%
Government	23,800	22,400	24,300	1,400	6.3%	-500	-2.1%

Industry Size Class

Size Class	Employees per firm	Number of Firms	March 2016	
			Employment in Size Class	% Total Employment
9	1000+	16	25,974	16.4%
8	500-999	27	18,993	12.0%
7	250-499	58	20,772	13.1%
6	100-249	189	28,150	17.8%
5	50-99	280	19,339	12.2%
4	20-49	641	19,766	12.5%
3	10-19	854	11,611	7.3%
2	5-9	1,172	7,726	4.9%
1	1-4	2,814	5,979	3.8%
0	0	467	0	0.0%
Total		6,518	158,310	100.0%

Annual Growth Rate for Total Nonagricultural Employment



Unemployment Information (all estimates in thousands)

	Beaumont - Port Arthur MSA				Texas (Actual)				United States (Actual)			
	C.L.F.	Emp.	Unemp.	Rate	C.L.F.	Emp.	Unemp.	Rate	C.L.F.	Emp.	Unemp.	Rate
Sep-16	178.7	165.8	12.9	7.2	13,416.8	12,754.7	662.1	4.9	159,636.0	151,977.0	7,658.0	4.8
Aug-16	177.8	164.6	13.3	7.5	13,378.4	12,709.5	669.0	5.0	159,800.0	151,804.0	7,996.0	5.0
Sep-15	175.2	163.5	11.7	6.7	13,067.2	12,480.5	586.8	4.5	156,607.0	148,980.0	7,628.0	4.9

Historical Unemployment Rates

