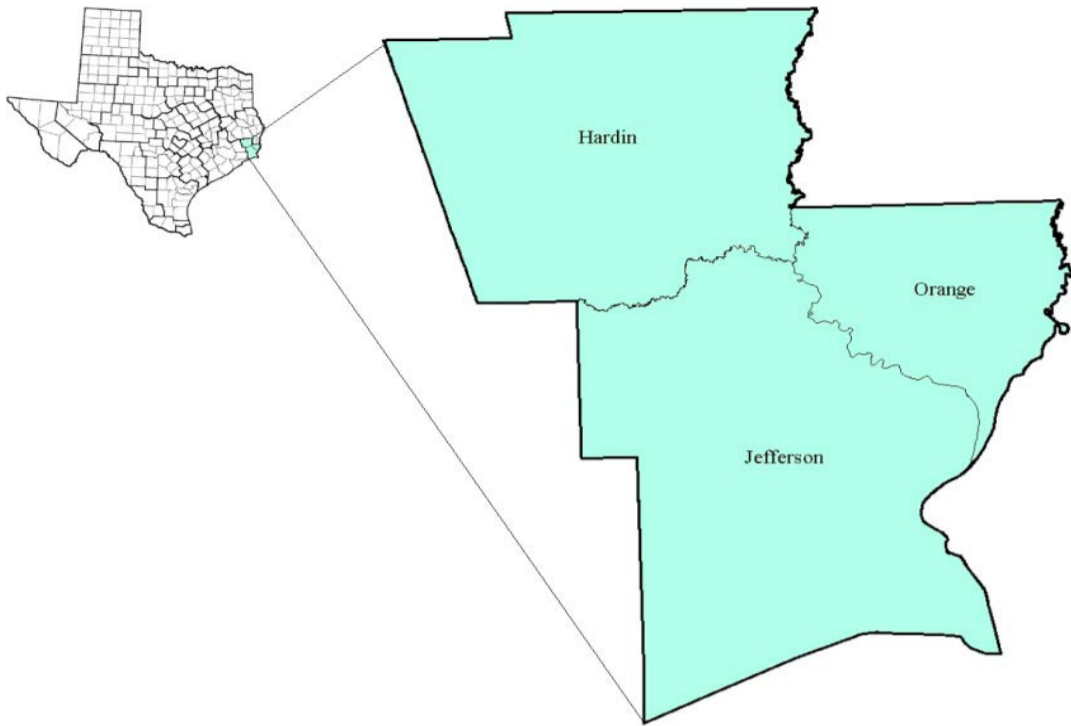


South East Texas Workforce Development Area

June 2016



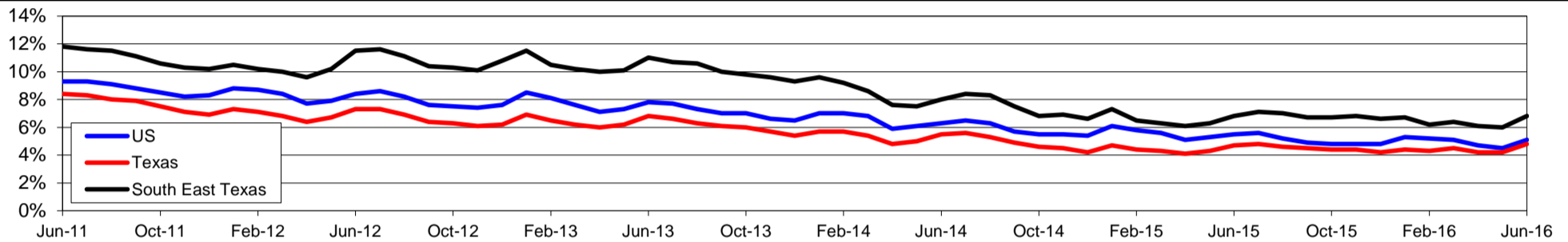
WDA Labor Force Statistics				
	Jun-16	May-16	Jun-15	OTY
CLF	171,808	170,881	171,627	181
Employed	160,050	160,555	159,969	81
Unemployed	11,758	10,326	11,658	100
Rate	6.8%	6.0%	6.8%	0.0%

Texas Labor Force Statistics				
	Jun-16	May-16	Jun-15	OTY
CLF	13,338,824	13,281,123	13,127,106	211,718
Employed	12,694,161	12,722,285	12,504,082	190,079
Unemployed	644,663	558,838	623,024	21,639
Rate	4.8%	4.2%	4.7%	0.1%

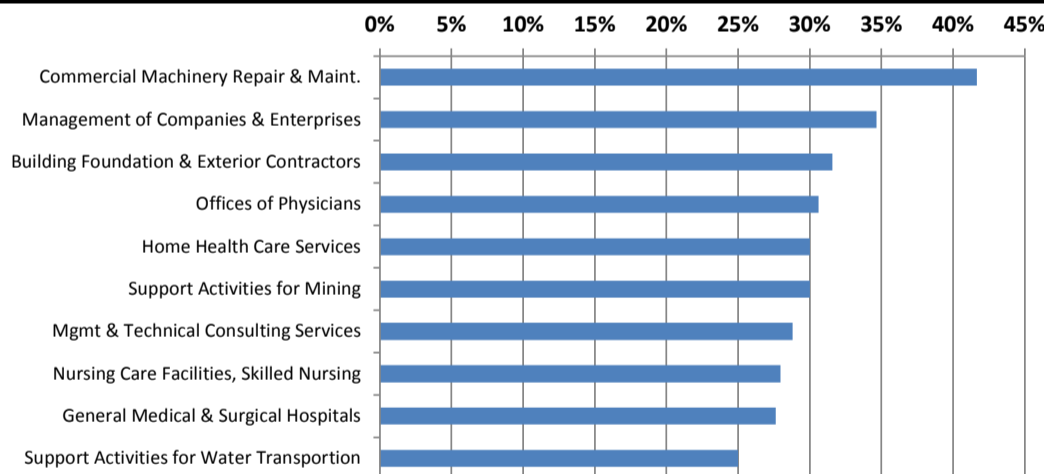
US Labor Force Statistics				
	Jun-16	May-16	Jun-15	OTY
CLF	160,135,000	158,800,000	158,283,000	1,852,000
Employed	151,990,000	151,594,000	149,645,000	2,345,000
Unemployed	8,144,000	7,207,000	8,638,000	-494,000
Rate	5.1%	4.5%	5.5%	-0.4%

Continued Claims for the Week of the 12th				
	Jun-16	May-16	Jun-15	OTY
WDA	3,105	2,845	3,033	72
Texas	155,999	148,489	148,789	7,210

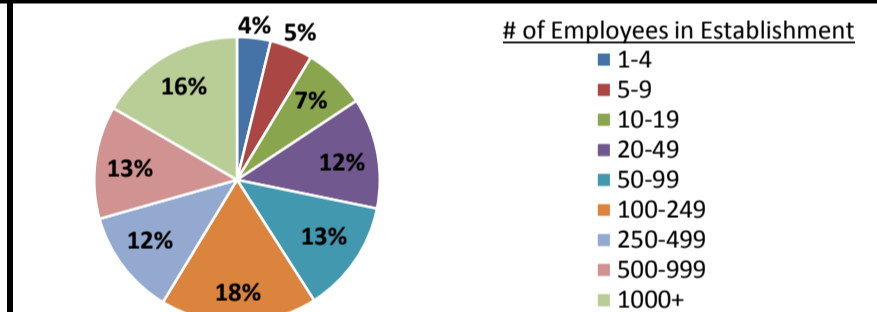
Historical Unemployment Rates



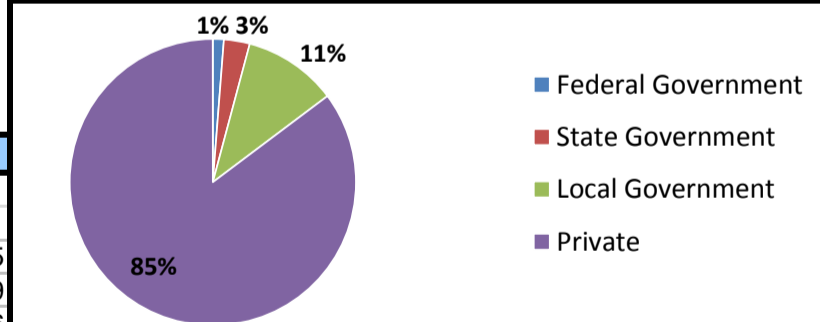
Projected Fastest Growing Industries in WDA (% growth 2012-2022)



Employment by Size Class (4th Quarter 2015)



Employment by Ownership (4th Quarter 2015)



Average Weekly Wage (4th Quarter 2015)

	Q4 2015	Q3 2015	Q4 2014	Change	
				Quarter	Year
WDA	\$1,076	\$971	\$1,041	\$105	\$35
Texas	\$1,099	\$999	\$1,070	\$100	\$29
US	\$1,082	\$974	\$1,036	\$108	\$46

Employment by Industry (4th Quarter 2015, Percent Change)

Industry	Employment	% of total	% Change	
			Quarter	Year
Natural resources and mining	1,222	0.8%	-4.5%	-35.1%
Construction	16,998	10.7%	-2.4%	-13.7%
Manufacturing	22,569	14.2%	-3.1%	-1.2%
Trade, transportation and utilities	33,429	21.0%	0.5%	-0.4%
Information	1,502	0.9%	-1.2%	-2.8%
Financial activities	5,921	3.7%	0.2%	4.6%
Professional and business services	14,325	9.0%	0.8%	-3.0%
Education and health services	35,802	22.5%	4.6%	2.2%
Leisure and hospitality	15,596	9.8%	-0.5%	1.8%
Other services	4,716	3.0%	-1.3%	5.4%
Public administration	7,345	4.6%	-0.6%	-2.0%
Total	159,425	100.0%	0.3%	-1.7%

Employment by Industry (4th Quarter 2015)

